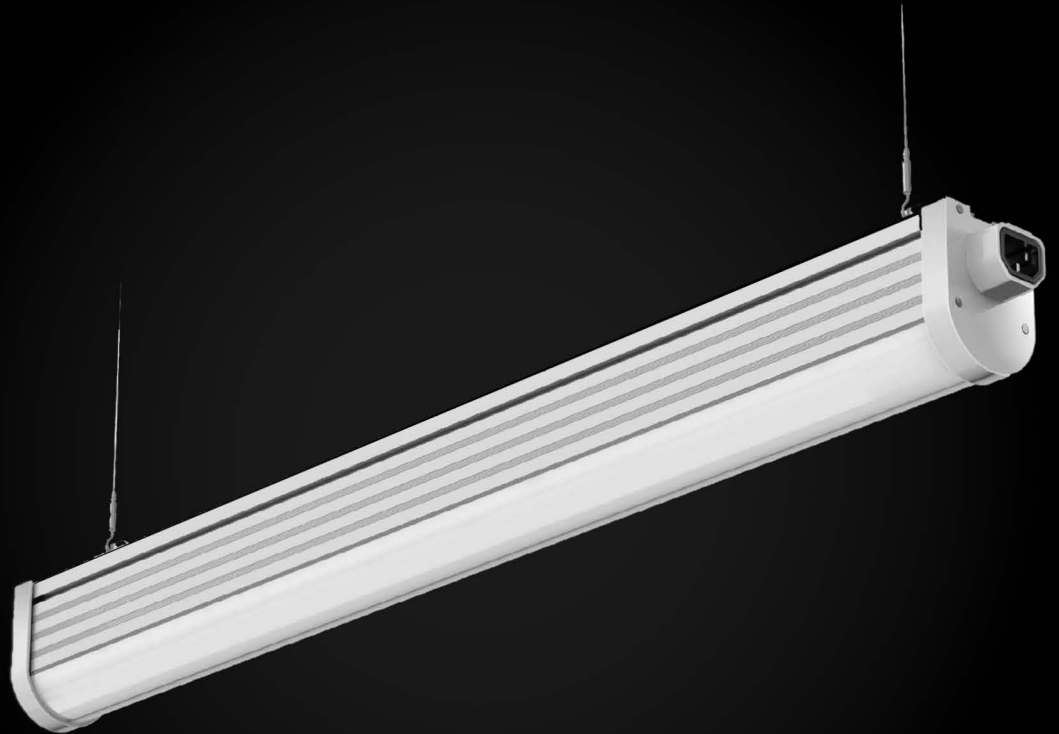


T201 Luminarie LED Fixture



IKIO LED T201 Luminarie led light is designed for direct replacement of existing T201 Luminarie led light fluorescent lighting systems. IKIO's tube is offered in a variety of color temperatures, for flexibility in all types of applications. Available options of frosted and clear lens allow for an evenly illuminated glow, resembling existing fluorescent tubes. The tube is outfitted with an internal IKIO driver.

Features

- Aluminum backing for excellent thermal management
- Frosted PMMA diffuser for even glow
- High power factor, low THD driver
- Mercury free design
- 80+ CRI
- No radiated EMI interference
- 100,000 Hour rated life at L70
- Multi-volt (100 -277V) input
- 10-Year Manufacturer's Warranty

800-931-5662 . Sales@ZnergyWorld.com

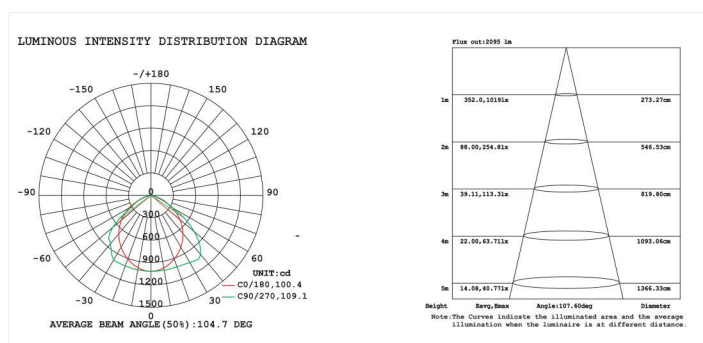


Technical specification

Internal Product Code	IK-T201-L130-0000-DX-XX			
Size (ft)	4			
Power Consumption (W)	40		60	
Lumen Output (Lm)	5200 ± 5%		7800 ± 5%	
Lumen Efficacy (Lm/W)	130 ± 5%			
CCT (K)	3000 ± 5%	3500 ± 5%	4000 ± 5%	5000 ± 5%
Color Rendering Index (CRI)	80+			
AC Input Rating (vAC)	AC 100-277v 50/60Hz			
Dimming (0-10v)	Optional			
PF	≥ 0.90			

Optometric Data

IK-T201-L130-0040-DX-XX



IK-T201-L130-0060-DX-XX

