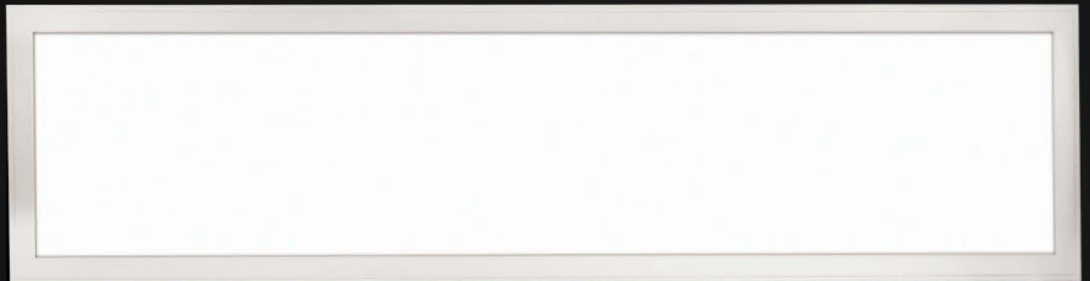


EDGE-LIT PANEL LIGHT SERIES PREMIUM (1X4)



IKIO's high performance LED edge-lit panels are excellent alternatives to traditional fluorescent troffers. The thin and lightweight edge lit design easily lays into drop ceilings. The LED and flat panel combination provides an energy efficient luminaire (up to 45% savings over traditional fluorescent) with no shadows or dark spots and meets the new higher performance DLC classification. Measuring at 1.18" in height, there is no need to worry about unforeseen obstacles in the ceiling. Available in 3000K, 3500K, 4000K & 5000K. With a universal input of 100-277 vAC and 0-10 dimming, the fixture is ideally suited for any commercial or industrial application.

Features

- Efficient, edge lit and glare free design
- 80+ CRI
- Universal input voltage 100-277 vAC
- 120° beam angle
- 0-10v Dimming: 10%-100% (Optional)
- Extruded aluminium frame with translucent diffuser
- Fits standard T-Bar
- Fixture is IC rated for contact with insulation after installation
- Ultra-thin – 1.18"
- Mounting options – surface mount (IK-FPSM-14) and suspension kits (IK-FPSK-14)
- Emergency backup Battery (Optional)

800-931-5662 • Sales@ZnergyWorld.com



Technical specification

Internal Product Code	IK-FP14-L125-XXXX-DX-XX				
Size (ft)	1 X 4				
Power Consumption (W)	40				
Lumen Output (Lm)	5000 ± 5%				
Lumen Efficacy (Lm/W)	125 ± 5%				
CCT (K)	3000 ± 5%	3500 ± 5%	4000 ± 5%	4500 ± 5%	5000 ± 5%
Color Rendering Index (CRI)	80+				
AC Input Rating (vAC)	AC 100-277v 50/60Hz				
Dimming (0-10v)	Optional				
PF	≥ 0.90				

ORDERING INFORMATION

MODEL

IK-FP14

-

LUMEN EFFICACY

L130

-

POWER

040

40W

-

CCT

30

30 - 3000K
35 - 3500K
40 - 4000K
45 - 4500K
50 - 5000K

DLC LISTING AND NOMENCLATURE

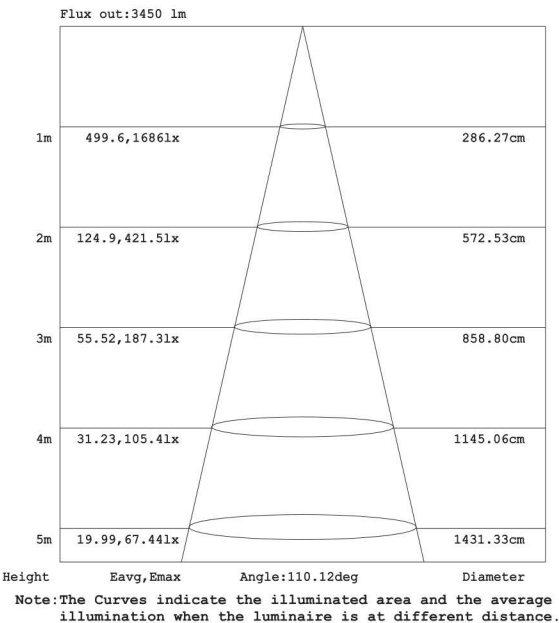
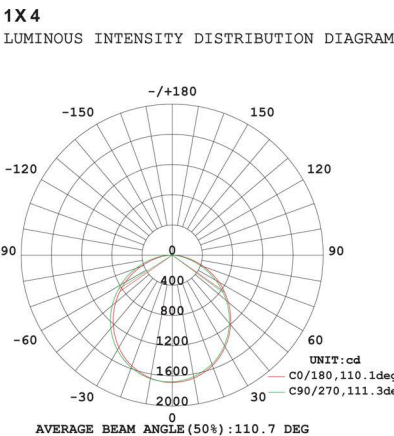
40W

DLC PRODUCT CODE

IK-FP14-0040-DX-30-J
IK-FP14-0040-DX-35-J
IK-FP14-0040-DX-40-J
IK-FP14-0040-DX-50-J
IK-FP14-0040-NX-30-J

DLC PRODUCT ID

PC3O9XSZ
PRJBIZLV
PHSJK3ZZ
PEE6WVGL
PMENZP3Q



Accessories



Surface Mount Kit

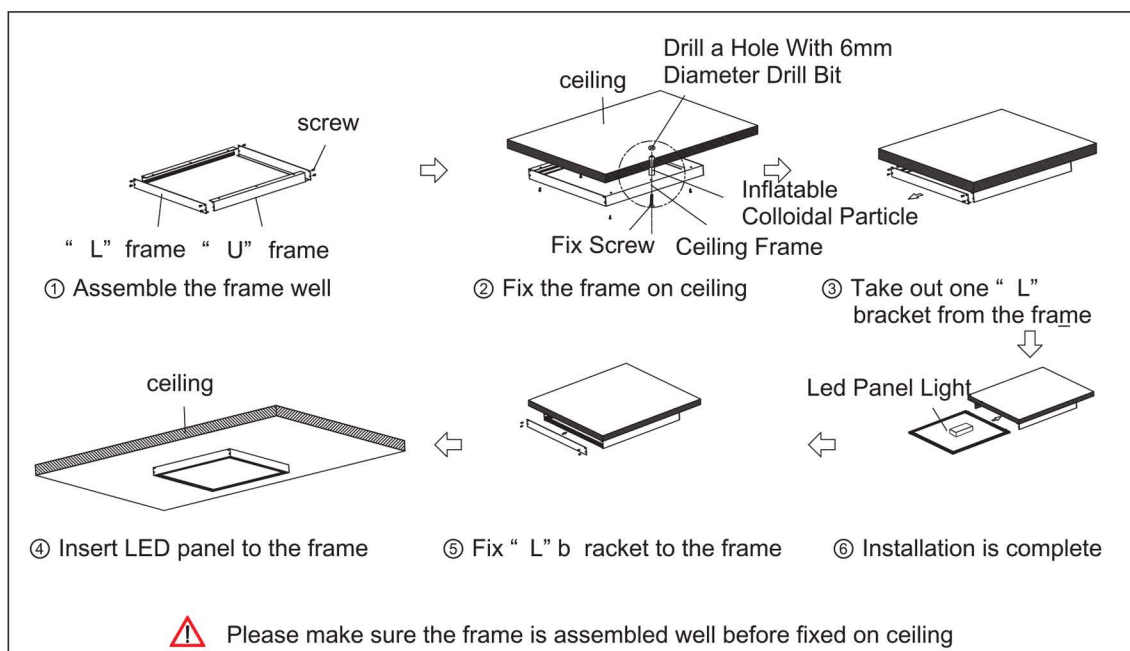


K-Clips



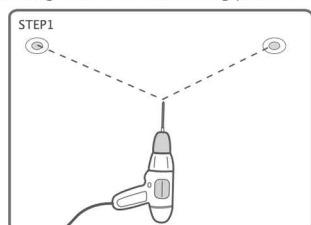
Suspension Kit

Surface Mount

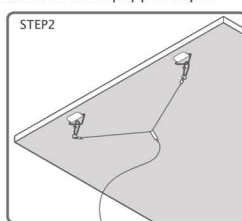


Suspended

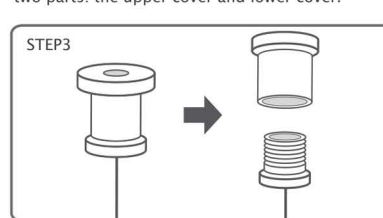
According to the width of the panel light, drill 2 mounting holes on the mounting position



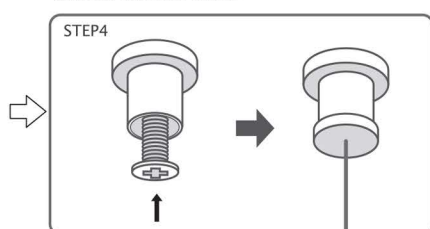
Button the panel light with the dog button of the equipped rope.



Twist off the rope grab device, and divide it into two parts: the upper cover and lower cover.



Fix the upper cover into prepared mounting holes with self-tapping screws (not included), and then twist on the lower cover.



Connect LED panel light by the hook of suspension wire

